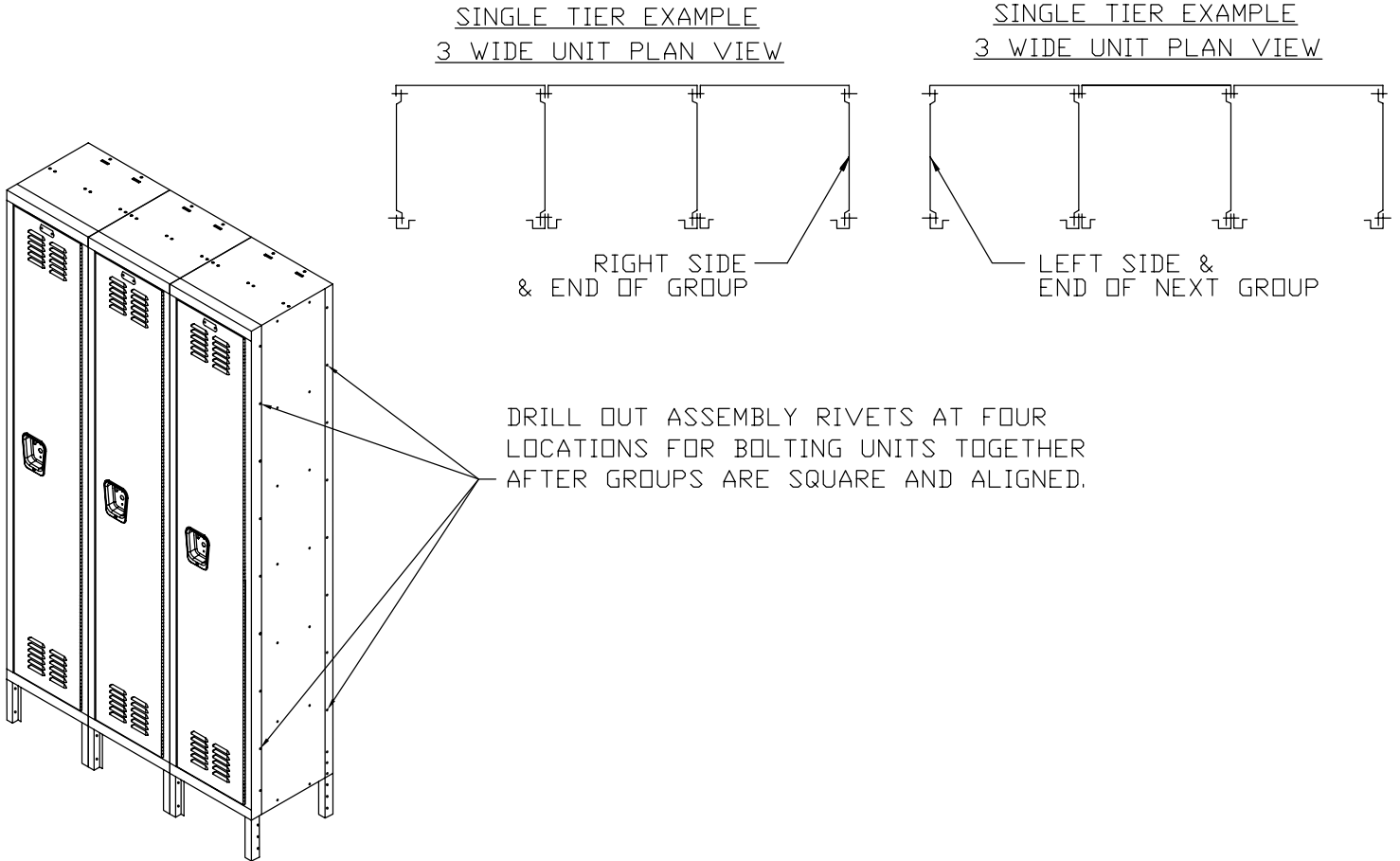


PRE-ASSEMBLED 3-WIDE, 1-TIER UNIT

PLEASE READ INSTRUCTIONS BEFORE INSTALLING LOCKERS.

STEP #1

Stand pre-assembled groups in place. Square up units with shims under REAR LEGS. TIGHTEN BOLTS AFTER GROUPS ARE SQUARE AND ALIGNED.

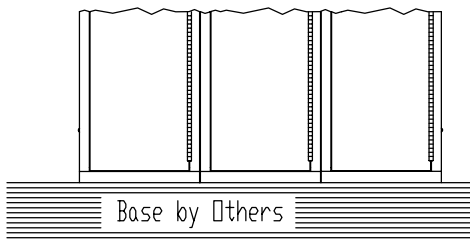


STEP #2

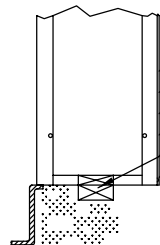
End lockers to be anchored plus Intermediate lockers on 36" centers MAX.

* Free standing lockers with legs MUST be anchored to floor through rear legs (see Sht. 2).

Free standing lockers without legs MUST to anchored thru shelf to floor. Installer MUST use blocking under shelf to fill in space at bottom of locker.



Front Elevation



Anchor with screws every 36" (max) and at the end of each row.
(SLEEPER BY OTHERS)

Vertical Section



2823 W. Orange Ave., P.O. Box 1267, Apopka, FL 32703
Tel 407-464-3611 Fax 407-464-3610

REVISIONS			PRE-ASSEMBLED 3-WIDE ANCHORING METHODS			
NO.	DATE	BY	DRWN BY	DATE	SCALE	DRWG NO.
3.	09-15-08	RVB				
4.	-	-	JMH	04-19-05	NONE	
5.	-	-	RDW	04-19-05		
6.	-	-	APP'D	DATE		

SA-0522

SHEET 1 of 2

RECOMMENDED ANCHORING METHODS

ANCHORS SUPPLIED BY OTHERS

WARNING:

FLOOR ANCHOR MUST HAVE A MINIMUM PULL-OUT VALUE OF 190 LBS.
WALL ANCHOR MUST HAVE A MINIMUM PULL-OUT VALUE OF 150 LBS.

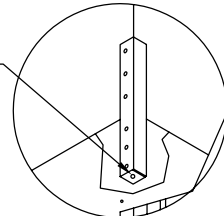
CLEANING OF LOCKERS:

THE LOCKERS ARE COATED WITH A POWDER COAT FINISH.
THEY REQUIRE CLEANING WITH A VERY MILD,
NON-ABRASIVE TYPE PRODUCT.

NEVER:

USE A TOXIC CLEANER THAT CONTAINS AMMONIA OR ACID
OR HOSE DOWN WITH WATER.

* REQUIRED FOR
FREE STANDING
LOCKERS.



View "A"

